

Our Renewable Energy Future

Loddon Mallee Context

Overview

This fact sheet covers key information about the renewable energy transition for Victoria and Loddon Mallee. This is a snapshot of key concepts, to find out more scan the QR code in each section.

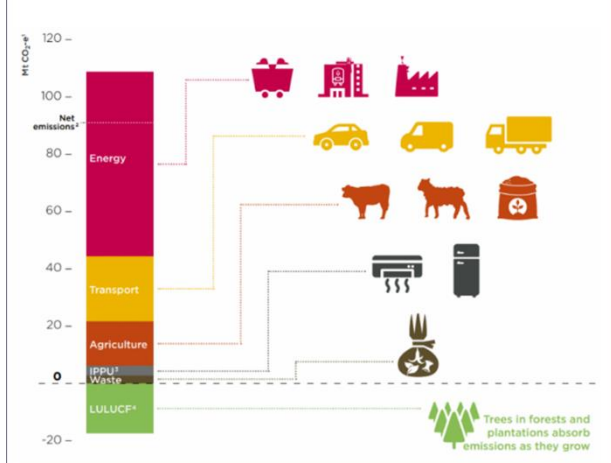


The content is aimed at people with a general understanding of renewable energy. To learn more, visit the Australian Renewable Energy Agency website.

Why we're Transitioning to Renewable Energy

Due to global emissions, the impact of climate change will affect all of us. Global greenhouse gas emissions continue to rise when they need to be rapidly falling. The main source of Victoria's emissions is burning fossil fuels – like coal, oil, and gas – for energy and transport.

Where Victorian emissions come from



Key Organisations

- The Australian Energy Market Operator (AEMO)
- Australian Energy Regulator AER
- AusNet
- Energy Safe Victoria (ESV)
- Transmission Company Victoria (TCV)
- VicGrid



Partnering with Traditional Owners

VicGrid is committed to seeking to work in partnership with Traditional Owners as distinct rights holders to Country and Sea Country. We will enable their self-determination priorities and ensure that First Peoples are at the centre of decision-making processes around issues and opportunities that directly affect them.



In response to Pupangarli Marnmarnepu 'Owning Our Future' Aboriginal Self-Determination Reform Strategy, VicGrid and DEECA will partner with Traditional Owners and other Aboriginal Victorians to identify and address key expectations and Aboriginal community concerns that align to their rights and cultural responsibilities.

Renewable Energy Zones

Renewable Energy Zones (REZs) are areas in Victoria with the greatest potential for renewable energy, such as wind, sunshine, rain, tides, waves and geothermal heat.



The Australian Energy Market Operator's (AEMO) Integrated System Plan (ISP) identified 6 Victorian REZs:

- Central North
- Gippsland
- **Murray River - Loddon Mallee**
- Ovens Murray
- South Victoria
- Western Victoria



Renewable Energy Projects Victoria

This map provides a summary of the energy generation facilities in Victoria that are operational, approved, in process and under construction. Scan the QR code to see the full map.



Energy,
Environment
and Climate Action

Victorian Renewable Energy Target Auctions

The Victorian Renewable Energy Target auctions -VRET1 and VRET2 - help us meet our renewable energy targets by providing long-term contracts that create investment certainty to build new energy generation projects.



Under VRET1, 5 projects were delivered:

- Berrybank Wind Farm
- **Cohuna Solar Farm – Loddon Mallee**
- Dundonnell Wind Farm
- Mortlake South Wind Farm
- Winton Solar Farm

Six projects have been successful under VRET2:

- **Derby Solar Project – Loddon Mallee**
- **Kiamal Solar Farm – Loddon Mallee**
- Fulham Solar Farm & DC Coupled Battery
- Frasers Solar Farm
- Glenrowan Solar Farm
- Horsham Solar Farm

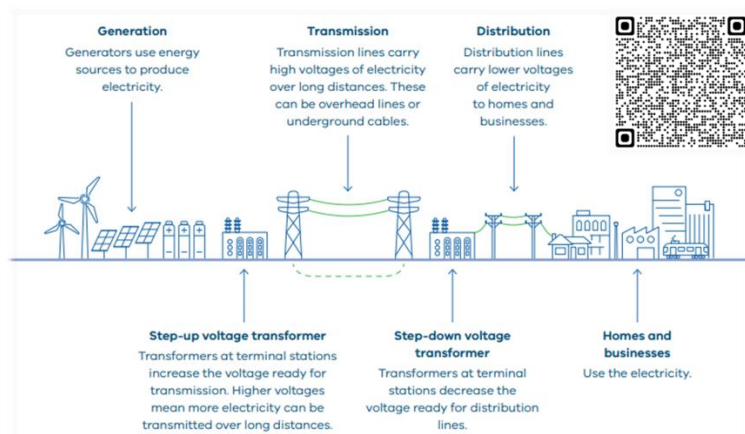
Community Engagement and Benefit Sharing

Community engagement is the process by which a developer interacts with the community to guide the development of a renewable energy project.



Benefit sharing is “sharing the rewards of renewable energy development with local communities.”

Our Electricity Network



Transmission Lines – VNI West

VNI West is a proposed new high capacity 500 kV double-circuit overhead transmission line, which will deliver vital new transmission infrastructure to:



carry clean, low-cost renewable power from renewable energy zones (REZs) in New South Wales and Victoria, in particular the wind and solar-rich regions of the Murray River REZ and the Western Victorian REZ

improve security and reliability in the electricity network as coal-fired power stations retire.

Distributed Energy Resources

Many Victorians use distributed energy resources to generate, store, manage and sell their energy. This includes solar panels, home batteries, electric vehicles, and controllable air conditioners.



Renters, community housing tenants, homeowners and rental providers can access subsidies to generate, store, manage and sell their energy.

We acknowledge Victorian Traditional Owners and their Elders past and present as the original custodians of Victoria's land and waters and commit to genuinely partnering with them and Victoria's Aboriginal community to progress their aspirations.



© The State of Victoria Department of Energy, Environment and Climate Action March 2024

Disclaimer

This publication may be of assistance to you but the State of Victoria and its employees do not guarantee that the publication is without flaw of any kind or is wholly appropriate for your particular purposes and therefore disclaims all liability for any error, loss or other consequence which may arise from you relying on any information in this publication.

Accessibility

To receive this document in an alternative format, email lmr.cpp@delwp.vic.gov.au